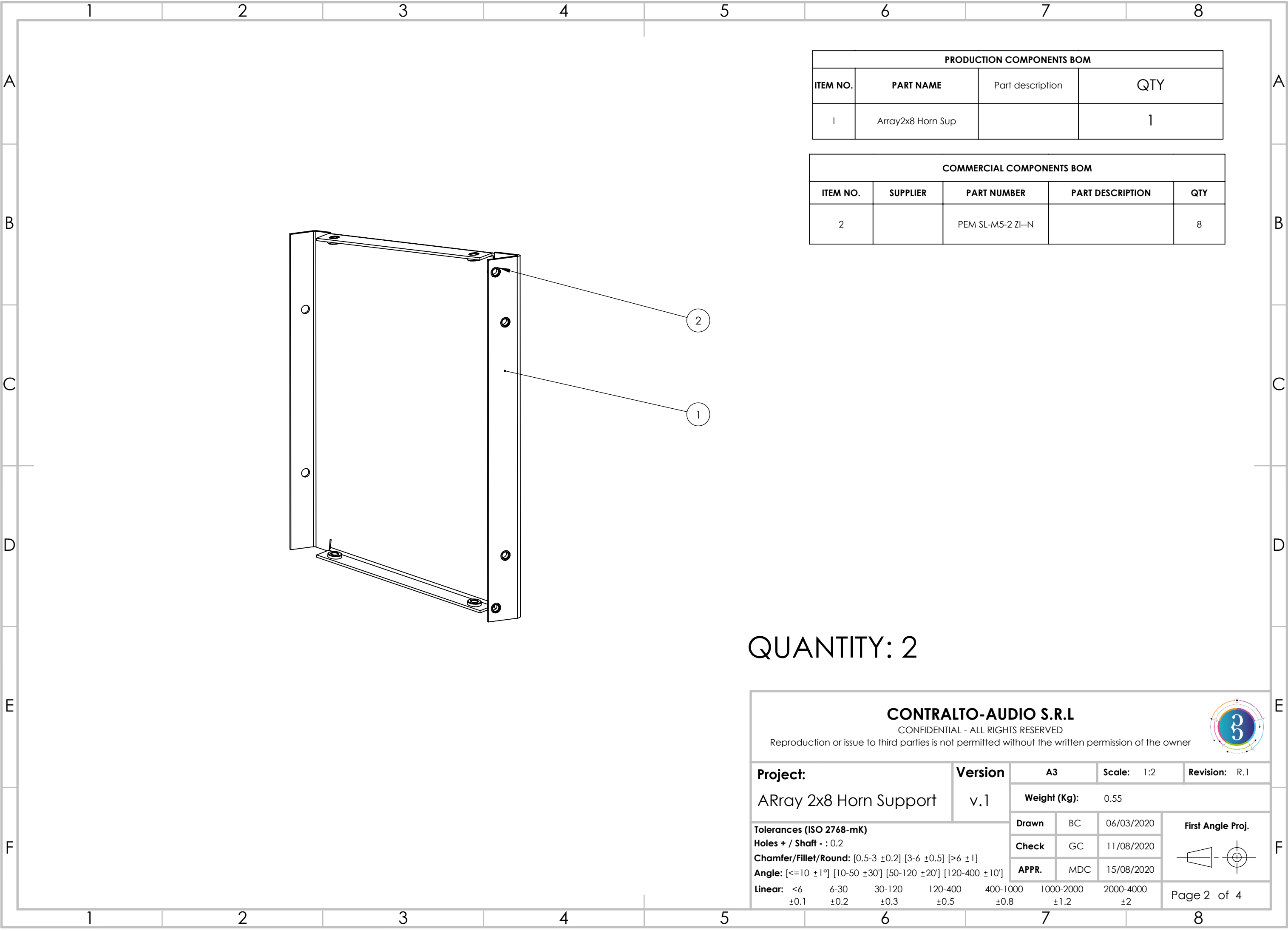
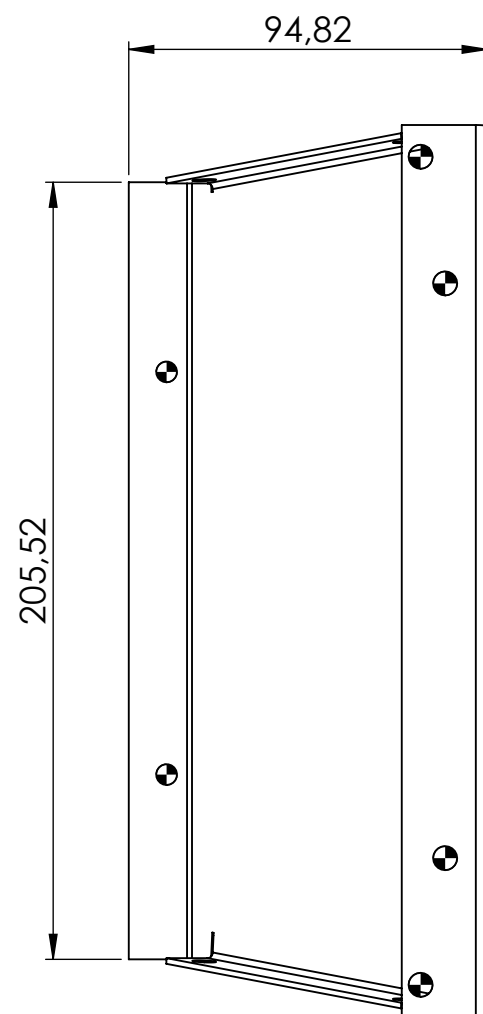
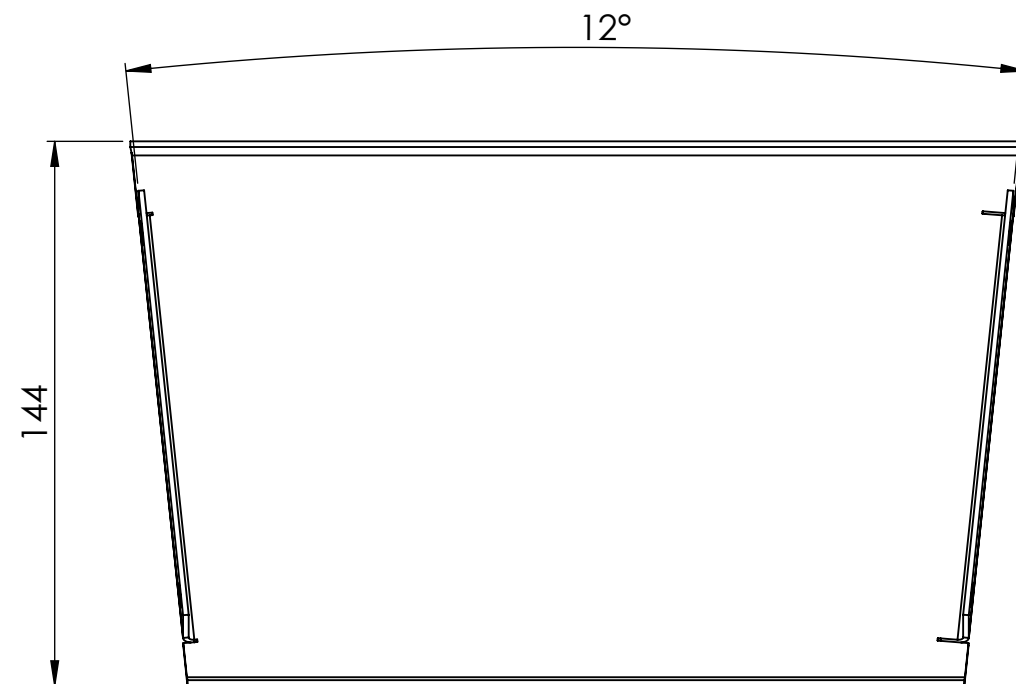


CONFIDENTIAL - ALL RIGHTS RESERVED  
Reproduction or issue to third parties is not permitted without the written permission of the owner

Project:  ARray 2x8 Horn Support		Version  v.1	A3		Scale: 1:2	Revision: R.1
			Weight (Kg): 0.55			
<b>Tolerances (ISO 2768-mK)</b> <b>Holes + / Shaft - : 0.2</b> <b>Chamfer/Fillet/Round:</b> [0.5-3 ±0.2] [3-6 ±0.5] [>6 ±1] <b>Angle:</b> [<=10 ±1°] [10-50 ±30°] [50-120 ±20°] [120-400 ±10°] <b>Linear:</b> <6      6-30      30-120      120-400      400-1000      1000-2000      2000-4000 ±0.1      ±0.2      ±0.3      ±0.5      ±0.8      ±1.2      ±2			Drawn	BC	06/03/2020	<b>First Angle Proj.</b> 
			Check	GC	11/08/2020	
			APPR.	MDC	15/08/2020	
			Page 1 of 4			

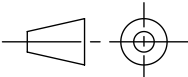


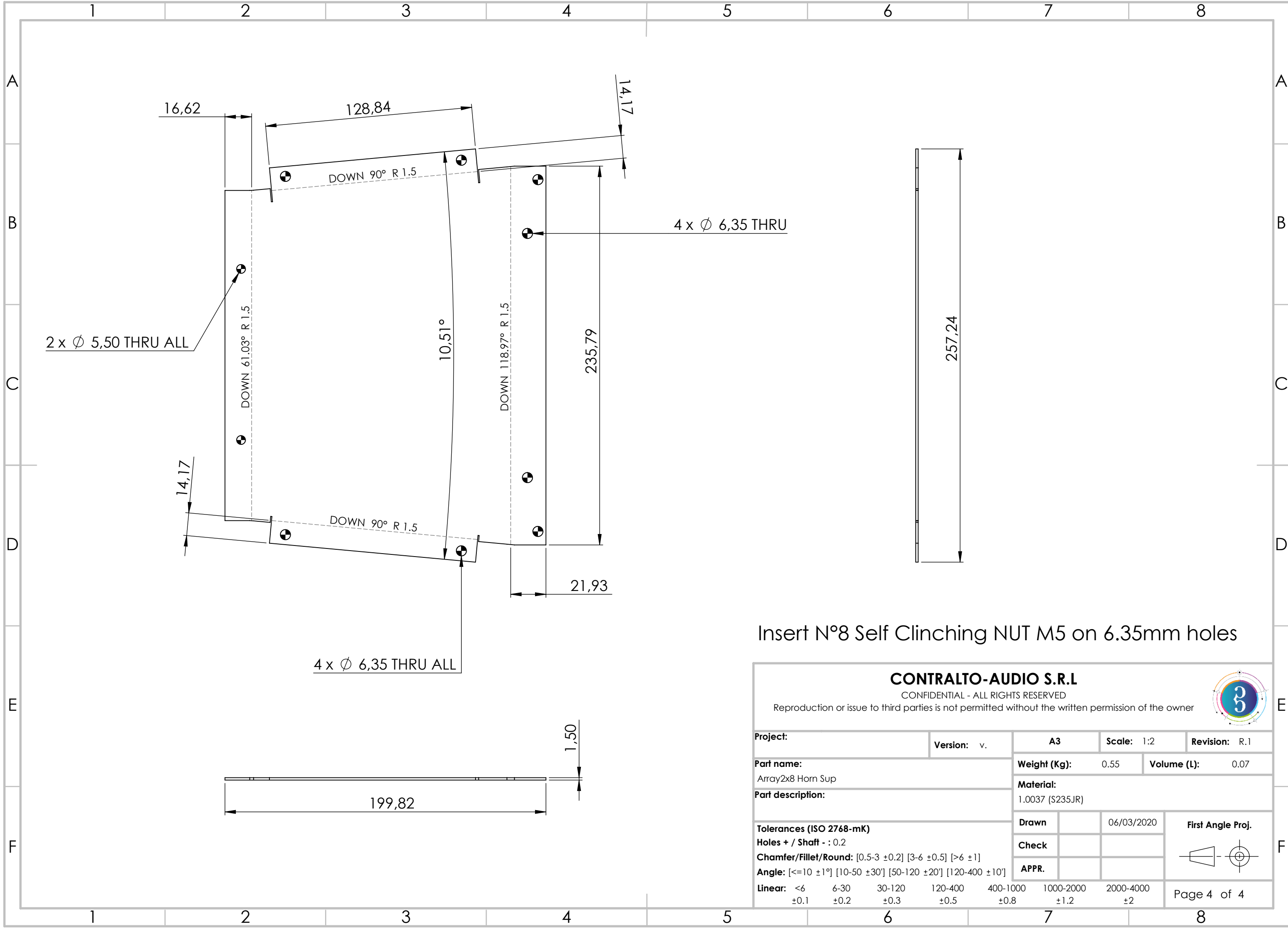


CONFIDENTIAL - ALL RIGHTS RESERVED


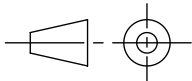
Reproduction or issue to third parties is not permitted without the written permission of the owner



<b>Project:</b> Array 2x8	<b>Version:</b> v.1	<b>A3</b>	<b>Scale:</b> 1:2	<b>Revision:</b> R.1
<b>Part name:</b> Array2x8 Horn Sup		<b>Weight (Kg):</b> 0.55	<b>Volume (L):</b> 0.07	
<b>Part description:</b>		<b>Material:</b> 1.0037 (S235JR)		
<b>Tolerances (ISO 2768-mK)</b>		<b>Drawn</b>	BC	06/03/2020
<b>Holes + / Shaft - : 0.2</b>		<b>Check</b>	GC	11/08/2020
<b>Chamfer/Fillet/Round:</b> [0.5-3 ±0.2] [3-6 ±0.5] [>6 ±1]		<b>APPR.</b>	MDC	15/08/2020
<b>Angle:</b> [=10 ±1°] [10-50 ±30°] [50-120 ±20°] [120-400 ±10°]				
<b>Linear:</b> <6 ±0.1    6-30 ±0.2    30-120 ±0.3    120-400 ±0.5    400-1000 ±0.8    1000-2000 ±1.2    2000-4000 ±2		Page 3 of 4		



Insert N°8 Self Clinching NUT M5 on 6.35mm holes

CONTRALTO-AUDIO S.R.L									
CONFIDENTIAL - ALL RIGHTS RESERVED									
Reproduction or issue to third parties is not permitted without the written permission of the owner									
									
Project:		Version: v.		A3		Scale: 1:2		Revision: R.1	
Part name: Array2x8 Horn Sup				Weight (Kg): 0.55		Volume (L): 0.07			
				Material: 1.0037 (S235JR)					
Part description:									
Tolerances (ISO 2768-mK)				Drawn		06/03/2020		First Angle Proj.	
Holes + / Shaft - : 0.2				Check					
Chamfer/Fillet/Round: [0.5-3 ±0.2] [3-6 ±0.5] [>6 ±1]				APPR.					
Angle: [<=10 ±1°] [10-50 ±30°] [50-120 ±20°] [120-400 ±10°]									
Linear:		<6	6-30	30-120	120-400	400-1000	1000-2000	2000-4000	Page 4 of 4
		±0.1	±0.2	±0.3	±0.5	±0.8	±1.2	±2	